

DP02

10 1/4" Deck Plate

Deck Plate Dimensions

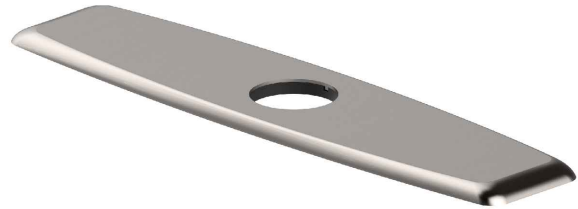
Overall Dimensions: 10 1/4" x 2 1/2" x 1/4"

Features

- Metal Construction
- For Use with Single Hole Mount Kitchen Faucets
- Covers Unused Kitchen Sink Holes

Available Finishes

- Brushed Gold
- Chrome
- Matte Black
- Oil Rubbed Bronze
- Black Stainless
- Spot Free Stainless Steel
- Spot Free Antique Champagne Bronze
- Brushed Brass



Warranty

Kraus 1 Year Limited Warranty

see website for details www.kraususa.com

