

BDP01

6 1/4" Deck Plate

Deck Plate Dimensions

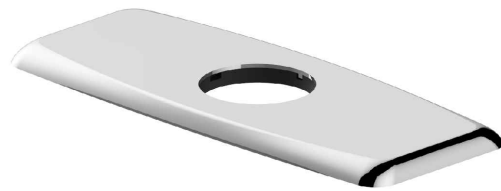
Overall Dimensions: 6 1/4" x 2 1/2" x 1/4"

Features

- Metal Construction
- For Use with Single Hole Mount Bathroom Faucets
- Covers Unused Bathroom Sink Holes

Available Finishes

- Brushed Gold
- Chrome
- Gunmetal
- Matte Black
- Oil Rubbed Bronze
- Spot Free Stainless Steel
- Spot Free Brushed Gold



NOTE: Deck plate assembly is compatible with all faucet models. Locating ring is required for Kraus models KBF-1211 and KBF-1221. For all other Kraus and non-Kraus models, simply remove the locating ring prior to installation, please refer to our installation manual for further information.

Warranty

Kraus 1 Year Limited Warranty
see website for details www.kraususa.com

